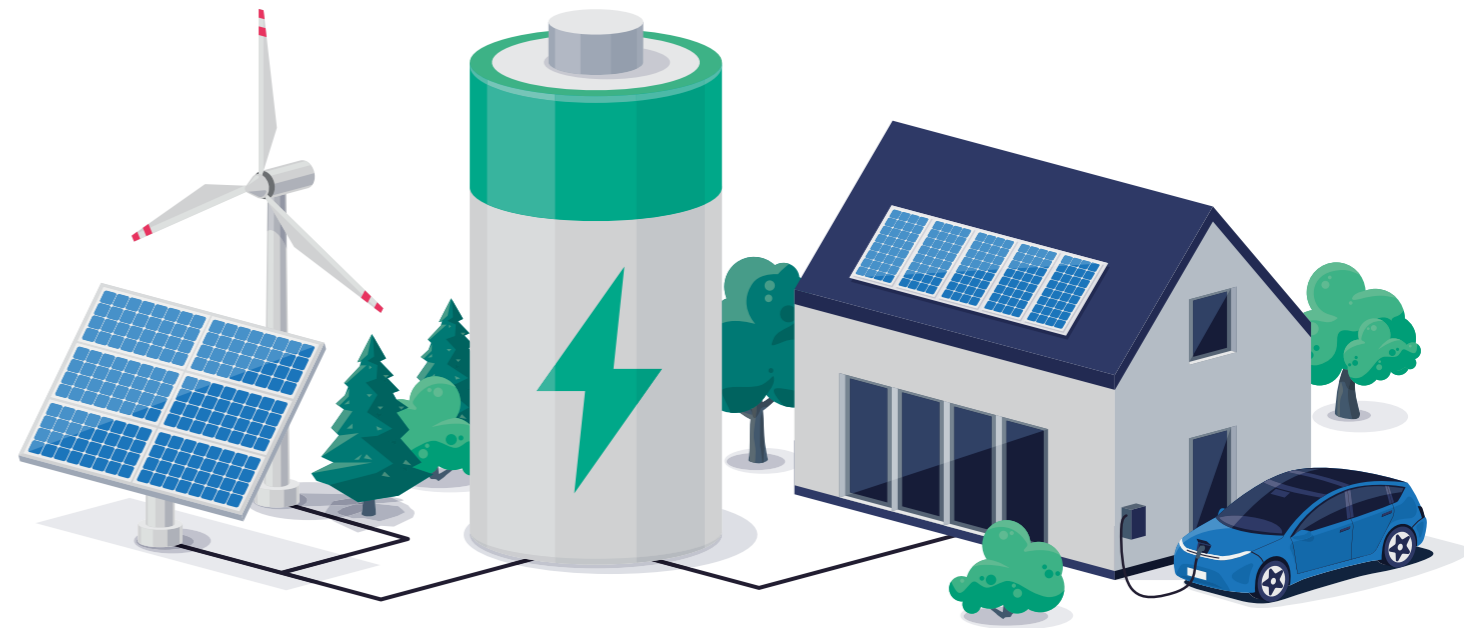


## ACCREDITATION

Our national and international recognition by different accreditation bodies ensures the high quality of our work. Our reports, declarations and certificates are accepted worldwide.

Since 2011 Kiwa Primara has been accredited by the Deutsche Akkreditierungsstelle GmbH (DAkkS) according to DIN EN 17025 and DIN EN 17065 to test and certify electrical equipment. In addition, we offer testing and certification in the IECEE CB Scheme procedure and are a recognized GS certification body.



Questions? Just contact us.

Visit our  
Homepage



**Kiwa Primara GmbH**  
**Gewerbestraße 28 / 32**  
**D-87600 Kaufbeuren**  
**Phone.: +49 (0) 8341 / 99 72 6-0**  
**Email: primara@kiwa.com**

# BATTERY TESTING WITH KIWA

Testing and certification services for batteries,  
cells and storage systems

[kiwa.com/de](https://kiwa.com/de)

# Battery Testing with Kiwa

At Kiwa Primara, we understand the importance of having batteries that are not only reliable and efficient but also safe for use in a variety of applications.

Our laboratory holds both DAkkS and CB accreditations, which are recognized as some of the most stringent and respected in the industry. This means that you

can trust our test results and be confident in the quality of our services.

Our team of experts is dedicated to delivering accurate and reliable test results that help you optimize battery performance and ensure the safety of your products.

## TESTING AND CERTIFICATION

The batteries are high-quality autonomous current sources that can be used in a high variety of devices.

At our laboratory, we offer testing and certification services for batteries and cells of different chemistries,

including those used in stationary, portable, automotive, and industrial applications. Our extensive scope of testing includes industry-leading standards such as:

- IEC 62133-1 and IEC 62133-2 for Nickel and Lithium batteries and their cells used in portable end-products
- IEC 62619 for Lithium batteries and their cells for industrial application
- IEC 63056 for secondary lithium cells and batteries for use in electrical energy storage system
- IEC 63057 for Secondary lithium batteries for use in road vehicles not for the propulsion
- UN38.3 and IEC 62281 for transportation Testing of Lithium Batteries
- IEC 61960-3 for performance testing of secondary cells and batteries
- IEC 62660 -1/ 2/ 3 for Secondary lithium-ion cells for the propulsion of electric road vehicles
- IEC 61427 for the performance of secondary cells and Batteries for renewable energy storage
- UL2271 for LEV application batteries
- UL1642 and UL2054 for primary and secondary lithium cells and batteries
- UL1973 for Stationary and Motive Auxiliary Power Applications batteries
- RTCA DO 311A for minimum Operational Performance Standards for Rechargeable Lithium Batteries and Battery Systems

## PERFORMANCE

At Kiwa Primara, we specialize in providing comprehensive cell performance evaluations that meet both international standards and your specific end-product application requirements. Our testing services are designed to help you meet upcoming battery regulations and achieve the highest levels of performance.

We offer a range of testing options, including the provision of test reports or raw data for critical factors such as capacity, internal resistance, temperature, and other relevant details. Our laboratory features the latest

testing equipment and can run up to 80 channels simultaneously, with each channel offering 5V/50A and the possibility of parallel configuration up to 1000 A.

Our team of experts is committed to delivering accurate and reliable test results that help you optimize battery performance and achieve compliance with relevant regulations. Contact us today to discuss your specific testing needs and find out how we can help you achieve your goals.

## WHY KIWA

- DAkkS /CB accredited testing laboratory
- Certificates of Conformity national & international standards
- Multiply environmental, mechanical, and electrical test benches
- Provision of coolant between -40 °C and +60 °C
- Provision of CAN communication tools
- Global market access
- Extensive global network offers a wide range of alternative testing options
- Exceptional services for customer support and communication